

# Strange

Page 1 of 2

Oct 20, 2020

## PRO SERIES 4-PISTON FRONT BRAKE KIT INSTRUCTIONS

**KIT #**  
B4153WC - 4-1/2" B.C  
B4154WC - 4-3/4" B.C

**APPLICATIONS**  
1987-present Strange Forged  
Aluminium Struts

### Important Notes

- B2792, B2793, & B2794A 11.25" steel rotors and two piece rotors have 0.312" minimal thickness
- B5010 semi-metallic brake pads have 0.200" minimal thickness
- Strange Engineering brake kits are designed for drag racing only
- Also consult installation instructions for B1850 Strange Four Piston Directional Caliper kit

### Before you begin installation

Brake rotors are shipped with an oil film on surface to prevent rust and must be cleaned before installation. Read these instructions thoroughly and save for future reference.

If after reading these installation instructions, you have any questions or comments, please do not hesitate to call us.

### KIT CONTENTS

ITEM#	PART#	QTY	DESCRIPTION
1	B4154E	2	Aluminum Hub Cap
2	S3520F	2	#222 Buna O-ring (installed in B4154E)
3	B1324E	2	Outer Hub Bearing Cone (Timken LM11949)
4	B2796	1	Left Hand Tapered Rotor (B4153WC & B4154WC kits only)
5	B2794	2	Two Piece Steel Rotor (B4153WC2 & B4154WC2 kits only)
6	B4154C	2	4.75" B.C. Aluminum H Hub (B4154WC kit)
7	B4154SP	2	4.50" B.C. Aluminum Hub (B4153WC kit)
8	B1320H	2	Inner Hub Bearing Cup (Timken LM67010 installed in B4154C/B4154SP)
9	B1324D	2	Outer Hub Bearing Cup (Timken LM11910 installed in B4154C/B4154SP)
10	A1028B	10	1/2" I.D. Wheel Stud Washer
11	A1028A	10	1/2"-20 x 2.50" Wheel Stud
12	B1320J	2	Inner Hub Bearing Cone (Timken LM67048)
13	B1328B	2	Hub Seal (National 6815)
14	S3402Q	4	3/8"-24 Caliper Bracket Bolt
15	S3402N	4	3/8" Washer
16	B4154G	1	Caliper Mounting Bracket (Driver side)
17	B1301E	4	3/8"-24 Press Nut (Installed in B4154G)
18	B1301H	16	0.025" Thick Caliper Shims (included with B1850)
19	B1850	1	Four Piston Caliper Kit Semi-Metallic Pads
20	B1301J	4	1/16" Thick Caliper Washer (included with B1850)
21	B5000Y	4	3/8"-24 x 1-1/8" Caliper Mounting Bolt (included with B1850 & B1855)
22	F1282	4	3/8"-24 Locknut
--	B2795	1	Right Hand Tapered Rotor (B4153WC & B4154WC kits only)
--	B4154F	1	Caliper Mount Passenger Side

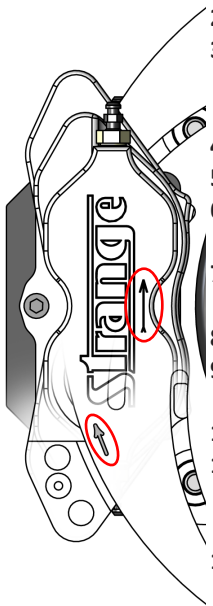
### WARNING - RACING IS HAZARDOUS - STRANGE BRAKES ARE FOR LEGAL DRAG RACING ONLY

Disclaimer of Warranty - Purchasers using Strange Engineering racing components and equipment any and all inventory services, purchasers acknowledge that due to differing conditions and circumstances under which all equipment and parts are installed and used, purchasers are not relying on Strange Engineering Co. skill or judgment to select or furnish the proper part or equipment. Purchasers expressly affirm they are relying upon their own skill or judgment to select and purchase suitable goods.

Strange Engineering Co. makes no warranties whatsoever, expressed or implied, oral or written, to purchasers. There is no warranty of merchantability made to purchasers. Strange Engineering Co., further excludes any implied warranty of fitness with respect to racing and equipment, any and all inventory and service.

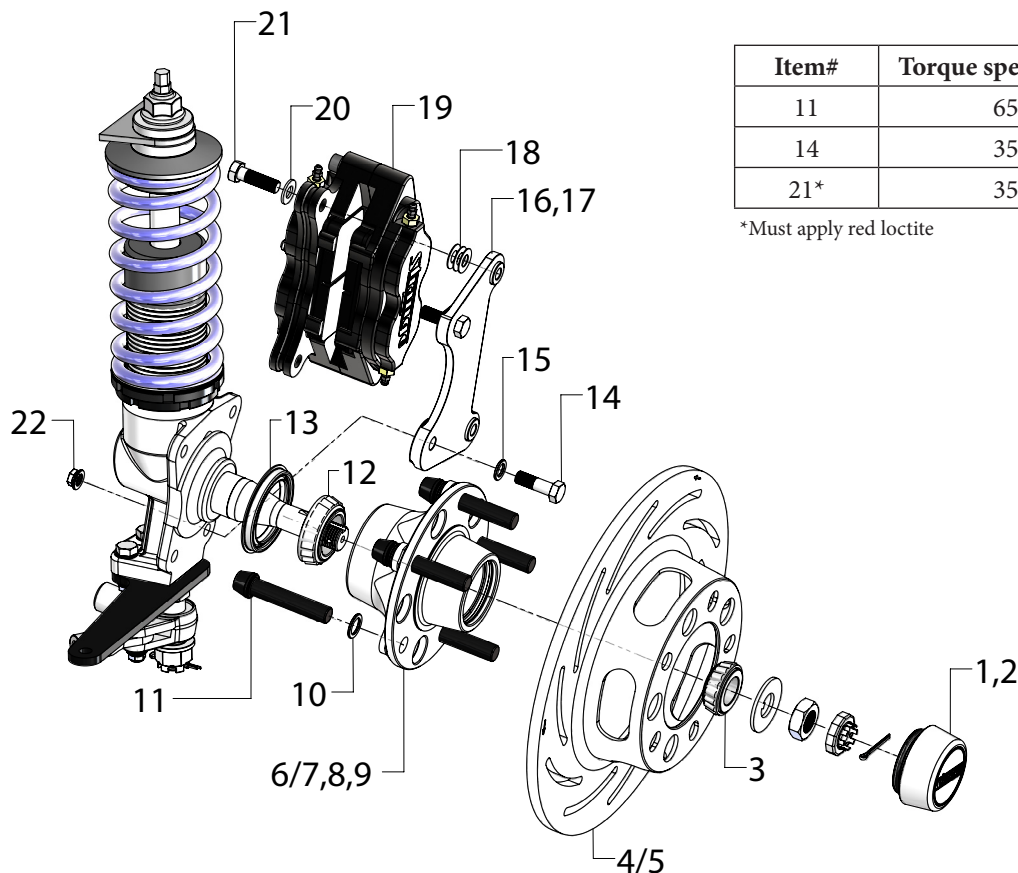
### Installation instructions

FIGURE # 1:



1. Raise and support front of vehicle on a level surface using suitable equipment.
2. Install the caliper mount (16) using the caliper bracket bolts (14), washers (15) and locknut (22)
3. Pack the inner (12) and outer bearing cone (3) with a suitable wheel bearing grease.  
**Note:** A bearing packer is recommended for this procedure. If one is not available, work as much grease as possible into the cage and around the rollers.
4. Place the inner bearing cone (12) into the hub (6 or 7).
5. Press the hub seal (13) into the inboard side of the hub (6 or 7) flush to the outer face of the hub.
6. Slide the hub assembly onto the spindle. Then slide the outer bearing cone (3) over the spindle and into the hub.
7. Install the key washer and spindle nut. Do not torque the spindle nut yet. Follow the steps bellow for proper spindle nut torque.
8. Mount the wheel and tire assembly on the hub and snug the lug nuts.
9. While rotating the wheel, torque the spindle nut to approximately 20 ft-lbs. Then loosen the spindle nut until the wheel spins freely and there is no end play.
10. Install the stamped spindle nut retainer, cotter pin, aluminium hub cap (1,2) and remove the wheel and tire.
11. Slide the brake rotor (4 or 5) over the wheel studs flush to the face of the hub (6 or 7).  
**Note:** Slotted rotors and caliper kits mount with the arrow pointing in the direction of normal rotation (see figure 1).
12. Please read B1850 or B1855 instructions for complete caliper and brake line installation. The proper brake pad and rotor bed-in procedure outlined in B1850 & B1855 instructions must be performed to avoid premature brake fade.

FIGURE # 2: B4153WC/B4154WC Exploded view



Item#	Torque spec (ft-lbs)
11	65
14	35
21*	35

\*Must apply red loctite