

9" Center Section Guidelines & Torque Specifications

| Item # | Part # | Description | Torque Spec. | Notes |
|--------|---------|------------------------------------|-----------------|---------------|
| 1 | N1912K | 10-24 X 1/2 FHSCS | Hand-tight | Blue Loctite |
| 2 | F1282 | 3/8-24 Nut | 35 ft-lbs | none |
| 3 | L7010AB | 9/16-18 12 Point Nut | 80 ft-lbs | Anti-seize |
| 4 | N1950C | 3/8-24 x 1.25 ARP 12 Pt. Screw | 35 ft-lbs | none |
| 5a | N1922A | 28 Spline Pinion Nut | 200 ft-lbs | Red Loctite |
| 5b | N1922B | 35 Spline Pinion Nut | 250 ft-lbs | Red Loctite |
| 6 | N1912U | 7/8-14 Plug | 40 ft-lbs | none |
| 7 | N1910H | Load Bolt Assembly (optional) | see notes below | none |
| 8a | N1975A | 7/16-20 ARP 12 Pt. Screw | 85 ft-lbs | Red Loctite |
| 8b | N1976A | 1/2-20 ARP 12 Pt. Screw | 120 ft-lbs | Red Loctite |
| 9a | N1905B | 5/16-18 x 0.375 BHSCS | 10 ft-lbs | none |
| 9b | N1902D | 5/16-18 x 0.625 BHSCS | 10 ft-lbs | none |
| 10 | N2300E | 7/16-14 x 1.50 ARP 12 Pt. Screw | 50 ft-lbs | Anti-seize |
| 11a | N1965 | 7/16-20 x 7/8" HHCS | 85 ft-lbs | Red Loctite |
| 11b | N1964 | 1/2-20 x 7/8" HHCS | 105 ft-lbs | Red Loctite |
| 11c | N1967 | 7/16-20 x 1" HHCS | 70 ft-lbs | Red Loctite |
| 11d | N1968 | 7/16-20 x 1-1/4" HHCS | 70 ft-lbs | Red Loctite |
| 12 | B1757B | 3/8-16 x 1.25" HHCS | 35 ft-lbs | none |
| 13 | L4000J | 3/8 NPT Socket Pipe Plug | 40 ft-lbs | Thread Sealer |
| 14 | H1122D | 1/2-20 x 3" SHCS | 80 ft-lbs | Anti-seize |
| 15 | B1320R | 3/8-16 x 1.50" HHCS | 35 ft-lbs | none |
| 16 | N1908E | 1/2 NPT Socket Pipe Plug | 40 ft-lbs | Thread Sealer |
| 17 | N1908F | 1/2-13 x 2.50" SHCS | 80 ft-lbs | Anti-seize |
| 18 | N1912R | 1/4-20 x 1-1/2 HHSCS | n/a | n/a |

Storage of Center Sections

Differential bearings, pinion bearings, and ring and pinion should be liberally oiled with gear oil and then sealed from the atmosphere in a plastic bag.

Load Bolt Set-up & Adjustment

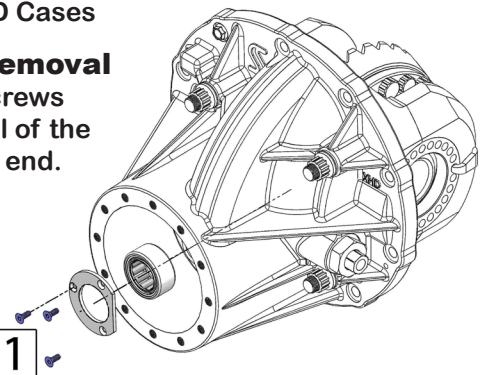
1. Tighten load bolt while turning assembly by hand until drag is felt.
2. Loosen load bolt approx. .001" from contacting the ring gear.
3. Rotate assembly again. If drag is felt, loosen load bolt an additional 0.001". If no drag is felt, hold load bolt in place and tighten the jam nut
4. Load bolt may need readjustment after every 4-8 passes depending on frequency of runs.

Tail Bearing Retainer Plate (shown below)

- Only Ultra & PRO HD Cases

Center Section Removal

- Use provided jackscrews (18) to aid in removal of the center from the rear end.
(only Ultra & Pro HD)
- Do not leave the jackscrew installed during operation



Gear Oil Type & Amount

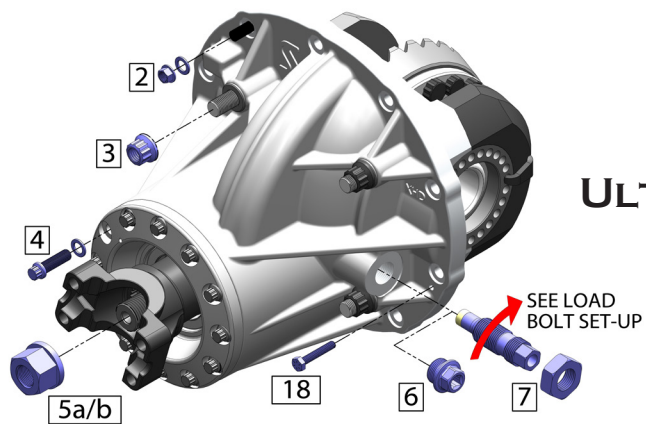
- SAE 85W-140 nonsynthetic gear oil is recommended
- Heavy Duty 9" housings require 2.5 quarts of gear oil
- Ultra Fab 9" housings require 4.0 quarts of gear oil
- Top loader housings require enough gear oil to reach the valley of the spool
- H1180 housings require 3 quarts of gear oil

Differential Friction Modifier

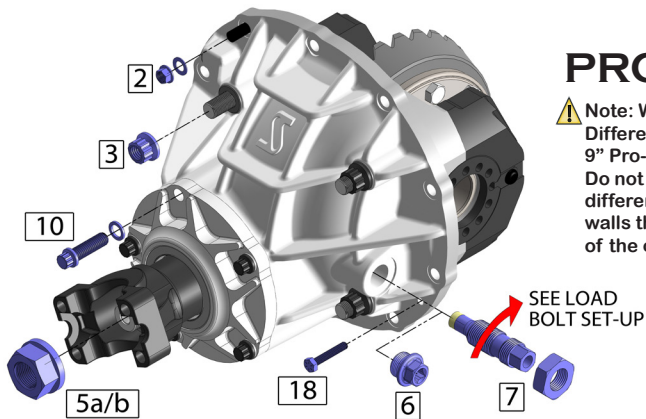
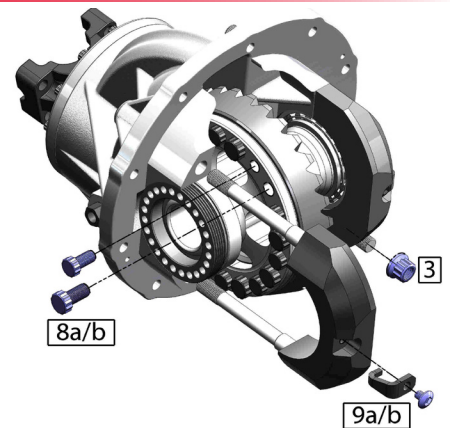
- Required for clutch-type limited slip differentials
- One entire bottle (3.8 fl. oz.) is required in addition to the 2.5 quarts of gear oil.
- Ford Racing brand additive part # CM-19546-A1 is recommended.
- Additive is required even if gear oil manufacturer states oil is compatible with limited slip differentials.

Break-in Procedure for Street Gears

1. No harsh acceleration!
2. Drive vehicle 50 miles
3. Allow 1/2 hour for cool down
4. Repeat for total of 250 miles
5. At 500 miles remove the center section, fully clean, use a fresh gasket & reinstall

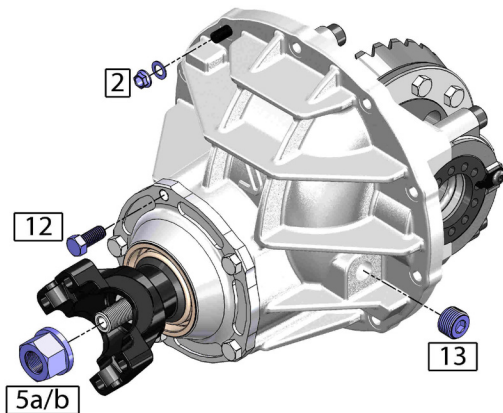
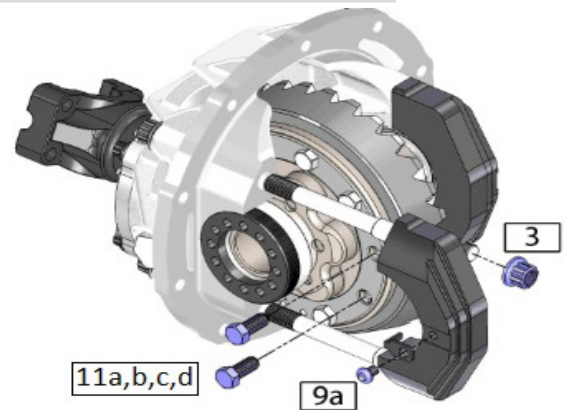


ULTRA CASE

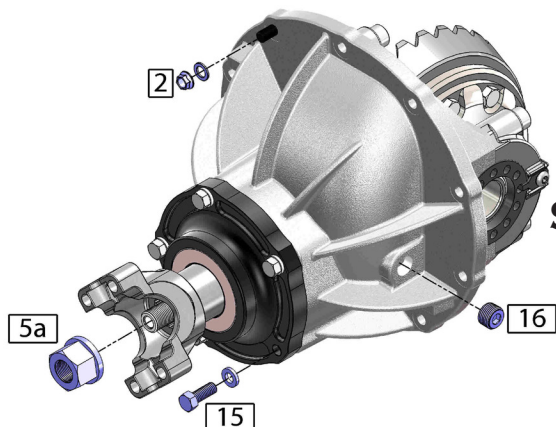
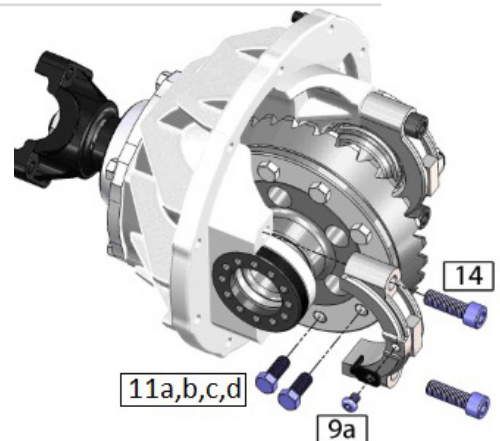


PRO HD CASE

⚠ Note: Wavetrac® and ARB Differentials do not fit the Strange 9" Pro-HD Aluminium Case. Do not grind the walls to fit the differential, it will result in thin walls that will reduce the integrity of the case.



PRO CASE



STREET CASE

