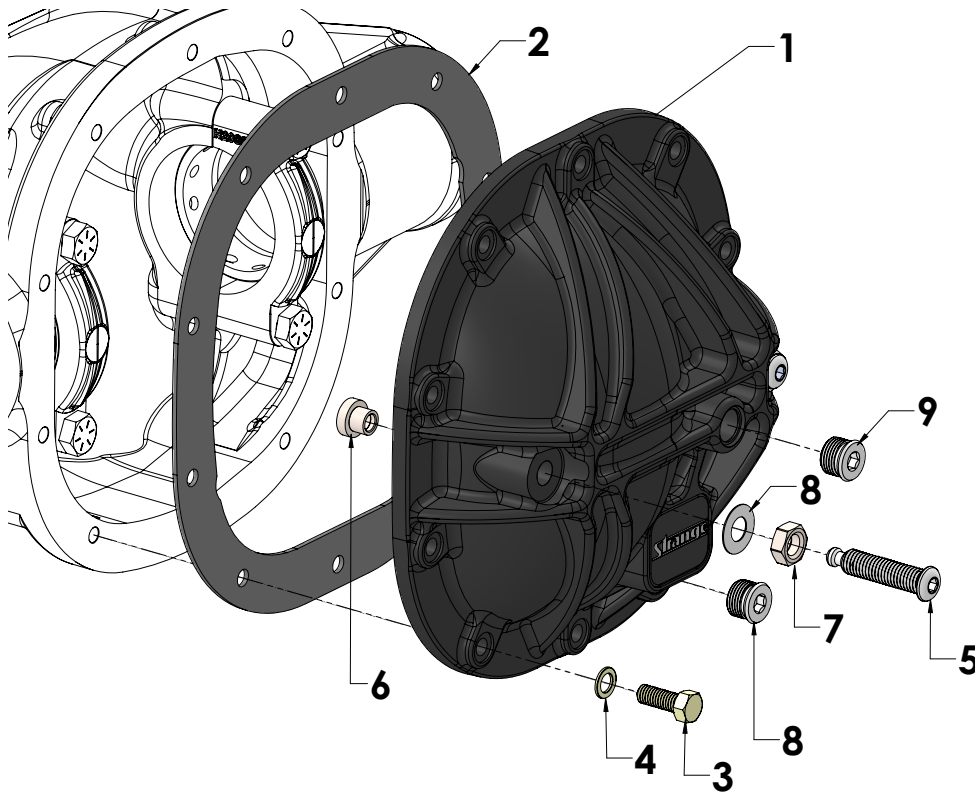


Strange Aluminum Support Cover for Ford 8.8

Features and Benefits

- For Ford 8.8 housing
- Strategically designed ribs for improved stiffness and main cap support
- Heat treated Chrome-moly load bolts
- Durable powder coating
- Magnetic fill plug for debris pickup
- Removal notches for easy disassembly

HC0788 COVER EXPLODED VIEW



HC0788 PARTS LIST				
ITEM#	PART#	QTY	DESCRIPTION	TORQUE SPEC
1	HC0788A	1	Cover - Ford 8.8	---
2	H2088G	1	Ford 8.8 Gasket	---
3	B3360B	12	5/16-18 x 1-1/4" HHCS	25ft-lbs
4	S3800W	12	5/16 AN Washer	---
5	R5201A	2	Preload bolt	10 ft-lbs
6	R5201B	2	Preload Button	---
7	R5201C	2	1/2-13 Thin nut	25ft-lbs
8	B1380C	2	1/2" ID Washer	---
9	R5201D	2	-8AN Plug w/Magnet & O-ring	20 ft-lbs

BEFORE INSTALLATION

- Inspect gear and main caps for any cracks or excessive wear.
-Replace as necessary.
- Ensure that the gasket surface is clean and the cover screw holes are free of debris
- Back off the preload bolts (5) and nuts (7) in the cover (1) to allow for clearance of the main caps.
Note: Make sure the preload buttons (6) can move freely

ASSEMBLY INSTRUCTIONS

1. Place the gasket (2) onto the housing.
Note: A small amount of sealant will be placed on the load screw (5) threads at the cover face to ensure a positive seal.
2. Using washers (4), and cover bolts (3) secure the cover onto the housing, finger tightening all of the bolts.
3. Once all of the bolts are in place, torque them to 35 ft-lbs.
4. Back the jam nut (7) on the load bolts (5) all the way to the bolt head.
5. Torque the load bolts to 10ft-lbs.
Note: Ensure they are not over torqued. There is a high potential for damage to the bearing.
6. Torque the load bolt locking nuts against the cover to 25 ft-lbs.
Note: Ensure they are not over torqued.
7. Remove the fill plug (9).
8. Fill until the fluid just starts to leak out of the fill plug hole. This should be about 2 quarts of gear oil (2-½ quarts if using a spool).
Note: Do not overfill above the recommended level
9. Install and tighten the fill plug to 20 ft-lbs.

Disclaimer of Warranty – Purchasers using Strange Engineering racing components and equipment any and all inventory services, purchasers acknowledge that due to differing conditions and circumstances under which all equipment and parts are installed and used, purchasers are not relying on Strange Engineering Co. skill or judgment to select or furnish the proper part or equipment. Purchasers expressly affirm they are relying upon their own skill or judgment to select and purchase suitable goods. Strange Engineering Co. makes no warranties whatsoever, expressed or implied, oral or written, to purchasers. There is no warranty of merchantability made to purchasers. Strange Engineering Co., further excludes any implied warranty of fitness with respect to racing and equipment, any and all inventory and service.