

9.75"



STRANGE 9.75" ALUMINUM INDEPENDENT REAR END CAMARO 2010-2014

Strange Engineering has developed and stringently tested its new ALL aluminum independent rear end. As opposed to 9" steel fabricated units, the Strange "one piece" aluminum unit provides a seamless installation, comparable strength, and quieter operation compared to 9" aftermarket gear sets at a weight that is only 20 lbs. greater than the OEM 218mm unit.



The strange 9.75" utilizes proven components- including the Strange 35-spline S-Trac (helical design) and Hy-Tuf axle shafts. Manufactured from lightweight 206-T4 aluminum, which provides exceptional strength and toughness at a reduced weight. Strange designed the 9.75" unit with a radial design- for both the main unit and the support cover, which provides outstanding strength and increased rigidity. Aircraft grade 2024-T351 billet aluminum main caps and steel adjuster nuts for easy and precise gear set-up. The main caps are further supported by the cover, increasing strength and decreasing deflection. The 9.75" is coated with black Enduraguard™ to maintain a clean finish.

MADE IN THE USA



ALUMINUM 9.75"

Strange offers 35-spline Hy-Tuf stub shafts to adapt it's 9.75" to popular existing aftermarket axle shaft assemblies. Including shafts for 14.313" axle flange to axle flange dimension, which will fit The Driveshaft Shop axle assemblies for OEM rear end/center configurations. Stub axles are also available for 17.30", which will fit The Driveshaft Shop and *G-Force 9" shaft assembly configurations. Custom Strange axle shafts are also available- call to discuss your application.

* G-force stamped steel CV joint dust caps are not compatible with Strange stub axles- Must be sealed with RTV

• **Seamless "Bolt-In" Installation**

• **Exceptional Strength, High Toughness, Lightweight Premium 206-T4 Aluminum**

• **Finned Housing and Radial Ribbed Cover Design Provides Substantial Strength and Rigidity**

• **Support Style Rear Cover Reinforces Main Caps to Increase Overall Strength and Minimizes Deflection (pictured below right)**

• **Aircraft Grade 2024-T351 Billet Aluminum Main Caps and Steel Adjuster Nuts for Easy and Precise Gear Set-Up**

• **35-Spline Hy-Tuf Axle Shafts & Helical Differential**

• **Ratios Available from 3.54-6.50**

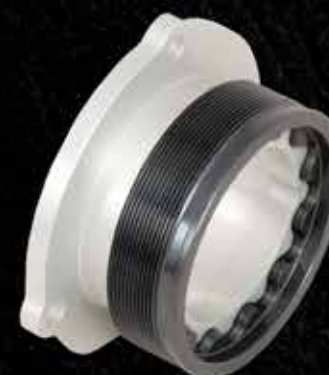
• **Robust Enduraguard™ Black Coating for Extensive Surface Protection and Provides a clean and easily maintained surface finish**

ENDURAGUARD COATING
POLYURETHANE BUSHINGS
INCLUDED



9.75" RING GEAR

ADJUSTER NUTS



***H-1400** 9.75" Independent rear end, choice of gear ratio from 3.54-6.50, 1350-series standard pinion yoke (optional chrome-moly pinion yoke available at additional cost), U-bolts, polyurethane bushings included (will fit OEM bushings-Strange does not offer), 35-spline S-Trac- fully assembled with choice of 35-spline Hy-Tuf stub shafts... **\$3,908.85**

* H-1400 requires aftermarket driveshaft & axle shafts



COVER WITH
INTERNAL
CAP SUPPORT