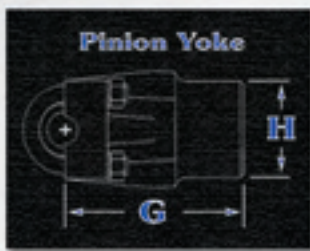


Driveshaft Components, Related Parts And Pinion Yokes

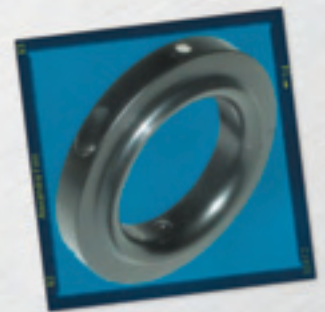


Strange chrome-moly weld ends and solid ultra impact u-joints

- U1670** Spicer weld end (1350)/ for 3"x .083 tube... **\$22.50**
U1672 Strange forged chrome-moly weld end (1350) for 3"x .083 driveshaft tube... **\$46.44**
U1673 Strange forged chrome-moly weld end (1350) for 3.50"x .083 driveshaft tube... **\$46.44**
U1674 Strange forged chrome-moly weld end (1480) for 3.50"x .083 driveshaft tube... **\$57.44**



Strange S-Series yokes are designed for street and many drag racing vehicles, while our chrome-moly yokes will endure the most abusive drag racing applications. Aluminum 9" yokes are offered to satisfy the most weight conscious racer. Call to discuss your application.



Pick-up collar # U1613-2

- U1610** U-bolt kit for all 1350 series pinion yokes (pr)... **\$11.55**
U1639 Non-cross-drilled 1480 series u-joint... **\$48.40**
U1640 High-impact solid 1350 series u-joint... **\$38.50**
U1641 Non-cross-drilled 1350 series u-joint... **\$28.25**
U1642 Cross-drilled 1330 (1.0625") series u-joint... **\$18.83**
U1643 Cross-drilled 1310 series u-joint... **\$18.83**
U1645 Conversion u-joint- P55-55-675 to 1350 series... **\$31.46**
U1646 Conversion u-joint- 1310 to 1350 series... **\$31.46**
U1647 Conversion u-joint- 1330 (1.0625") to 1350 series... **\$31.46**
U1648 Conversion u-joint- 1330 (1.125") to 1350 series... **\$31.46**



U1610 U-bolts

- U1675** Spicer weld end (1330) for 3"x .083 tube... **\$22.50**
U1676 Spicer weld end (1310) for 3"x .083 tube... **\$22.50**
U1700T Seamless chrome-moly driveshaft tubing (5 ft. pc.) **\$82.50**
U1703T Seamless chrome-moly driveshaft tubing (5 ft. pc.) **\$115.50**

Complete Driveshafts - Pages 133-134

Ford 9" Pinion Yokes & Related Components

- U1603** Ford 9" / 28 spline / 1350 series (Strange chrome-moly) (N1918 must be used when using U1603 with OEM or Daytona style pinion support) (G= 4.048 H= 1.812) (2.80 lbs.)... **\$125.00**
U1604 Ford 9" / 35-spline / 1350 ser. (Strange chrome-moly) (G= 4.048 H= 2.125) (2.86 lbs.)... **\$125.00**
U1624 Ford 9" / 35-spline / 1350 series (Strange titanium) (G= 3.875 H= 2.125) (1.35 lbs.)... **\$595.00**
U1633 Ford 9" / 28-spline / 1350 series (Strange aluminum) (G= 3.875 H= 1.804") (1.00 lbs.)... **\$249.50**
U1634 Ford 9" / 35-spline / 1350 series (Strange aluminum) (G= 3.875 H= 2.113") (1.00 lbs.)... **\$249.50**

- U2203** Ford 9" / 28 spline / 1350 series (Strange S-Series) (G= 4.048 H= 1.812)... **\$89.50**
U2304 Ford 9" / 35-spline / 1480 ser. (Strange chrome-moly) (G= 4.048 H= 2.125) (2.86 lbs.)... **\$280.50**
N1918 Pinion yoke spacer kit (For U1603 yoke- Only required when used with a stock Ford or Daytona pinion support.)... **\$10.45**
U1613 Pick-up collar (1 magnet) for U1603 yoke... **\$50.05**
U1613-2 Pick-up collar (2 magnets) for U1603 yoke... **\$62.55**
U1613-4 Pick-up collar (4 magnets) for U1603 yoke... **\$84.55**
U1614 Pick-up collar (1 magnet) for U1604 yoke... **\$50.05**
U1614-2 Pick-up collar (2 magnets) for U1604 yoke... **\$62.55**
U1614-4 Pick-up collar (4 magnets) for U1604 yoke... **\$84.55**